

Because life is

Petty<sup>TM</sup>  
Real

10 May Street  
Barrowford  
BB9 8NZ



For Sale

£95,000

- Mid-Terrace
- Two Bedrooms
- Large Lounge
- Modern Kitchen
- Rear Yard

- Spacious Bathroom
- Popular Location
- Close To Schools and Shops
- Near To Transport Links
- Viewings Recommended



This is a fantastic opportunity to own a two-bedroom mid-terrace house located in the popular Village of Barrowford. and is ideally situated Close to schools, amenities, and transport links. This house would be perfect for first-time buyers or growing families.

The ground floor provides a spacious lounge which is roomy and cozy with a built-in fireplace., and a dining kitchen with under-stairs storage. The first floor has two large bedrooms and a bathroom.

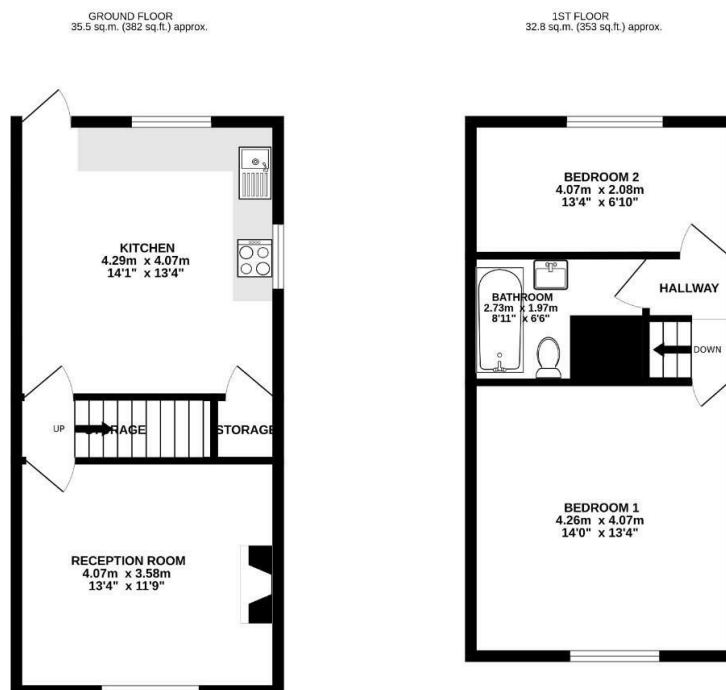
The large modern kitchen houses matching wall, base, and drawer units with contrasting work surfaces, an embossed tile splashback, stainless steel sink, and an oven with a gas hob. The kitchen space also benefits from becoming a lovely diner.

The spacious bathroom includes a three-piece white suite, a full-standing basin, panel bath with an overhead shower, and a low-level W.C. All surrounded by clean white tiling.

To the rear of the property is an enclosed yard.

The entire property benefits from the modern-day comforts of UPVC double glazing and gas central heating.

Viewings are highly recommended!



TOTAL FLOOR AREA: 68.2 sq.m. (734 sq.ft.) approx.

Whilst every attempt has been made to ensure the accuracy of the floorplan contained here, measurements of floors, windows, rooms and any other items are approximate and no responsibility is taken for any error, omission or mis-statement. This plan is for illustrative purposes only and should be used as such by any prospective purchaser. The services, systems and appliances shown have not been tested and no guarantee as to their operability or efficiency can be given.  
Mark Hall - Macclesfield ©2024



These particulars, whilst believed to be accurate are set out as a general outline only for guidance and do not constitute any part of an offer or contract. Intending purchasers should not rely on them as statements of representation of fact, but must satisfy themselves by inspection or otherwise as to their accuracy. No person in this firm's employment has the authority to make or give any representation or warranty in respect of the property.

134 Gisburn Road, Barrowford, Lancashire, BB9 6HQ  
T. 01282 615900  
Barrowford.sales@pettyreal.co.uk

[www.pettyreal.co.uk](http://www.pettyreal.co.uk)